



FREE



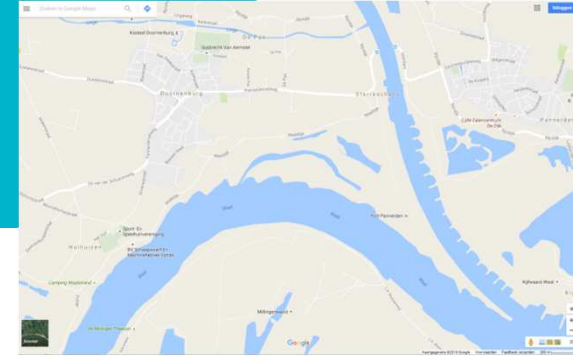
# Habitat use and activity patterns of large grazers in the 'Klommenwaard'

**Margje Voeten**

Senior lecturer Applied Biology

# Klompenwaard (100 ha)

- Gelderse poort (junction Rijn/Waal)
- Natural floodplains
- Untill 1991 farmland; 1999: new land use plan
- Grasslands, brush/scrubs, willow-woodlands
- 17 Koniks and 25 Galloways
- In 2012: 20 'Rode geuzen' and 10 Koniks



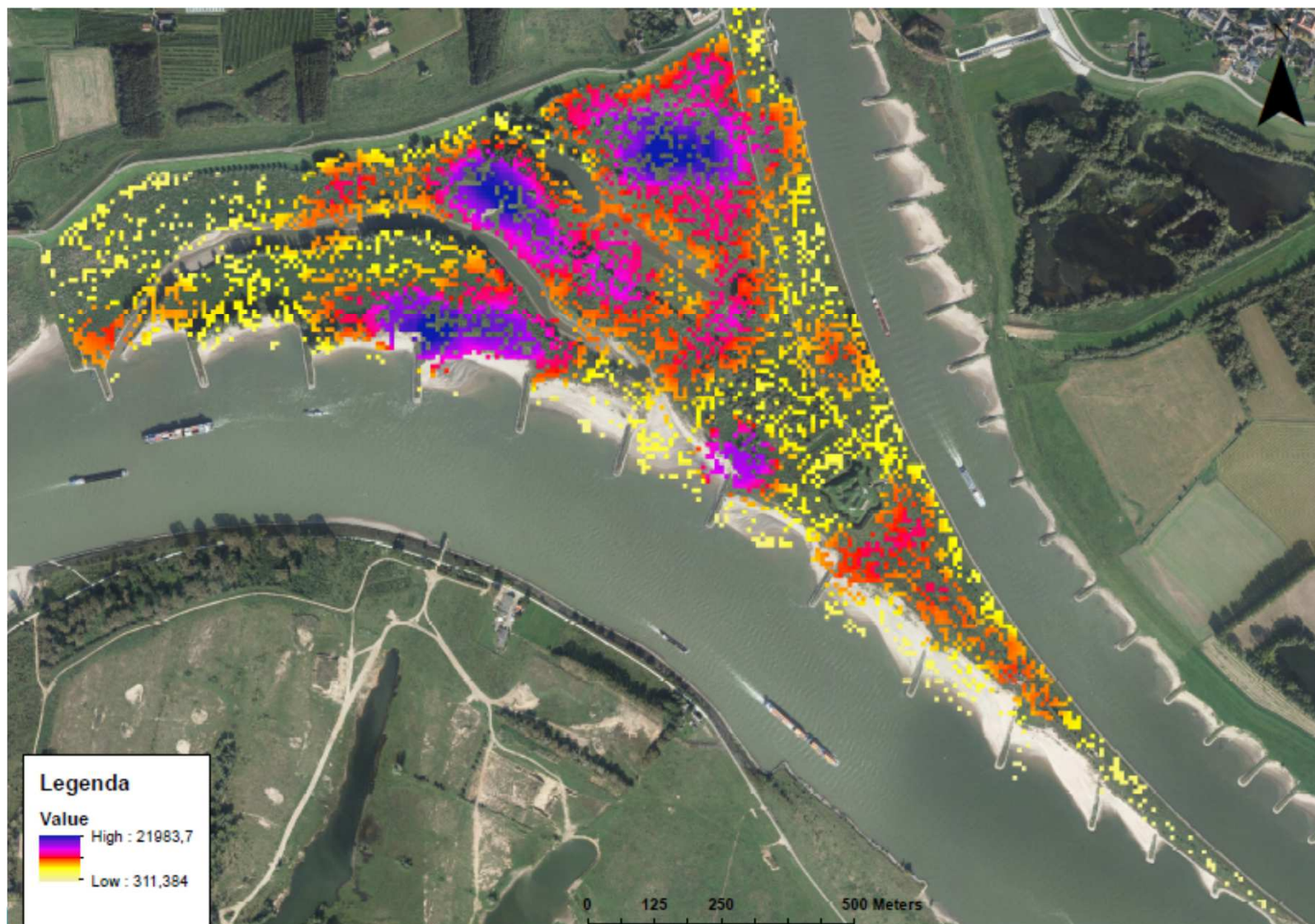
# Effect of grazers on vegetation development : habitat use + activity patterns

- GPS collars
- 24/7 observations
- Location & activity
- Welfare animals

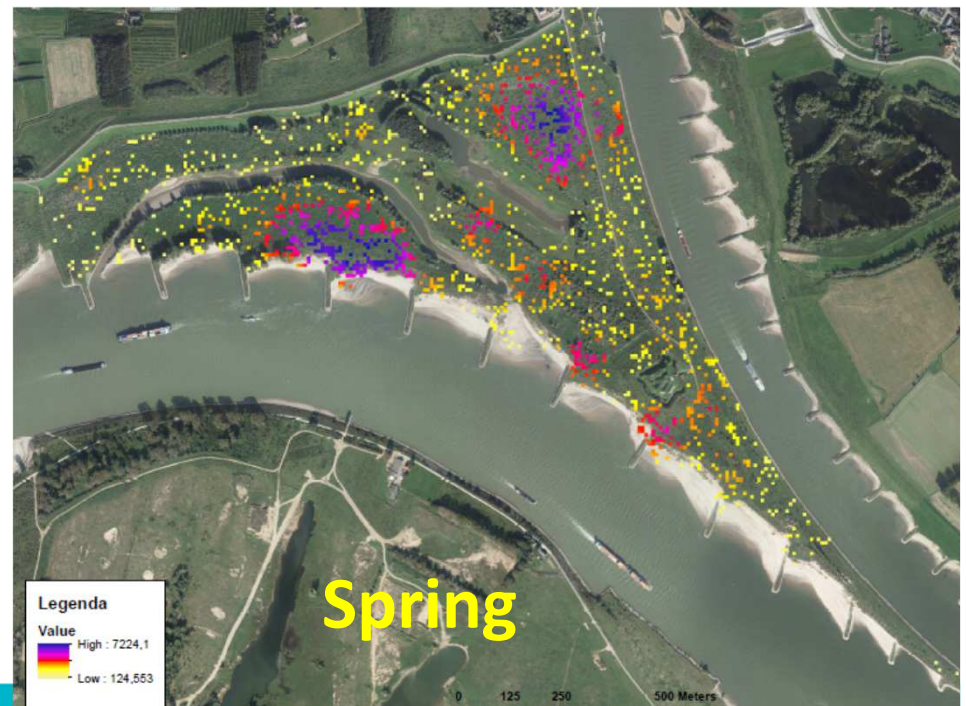
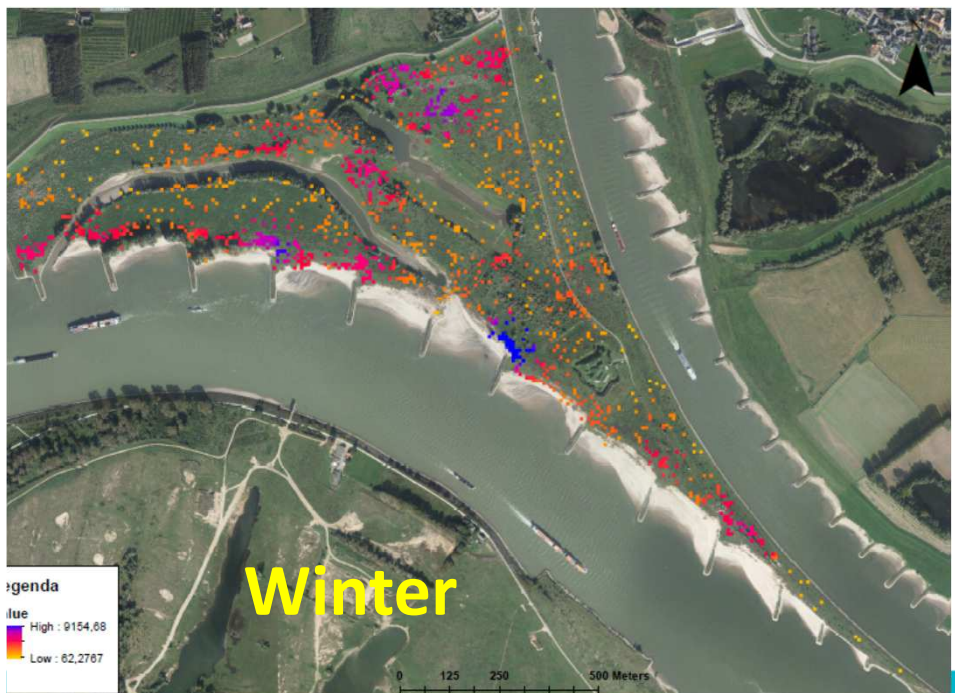
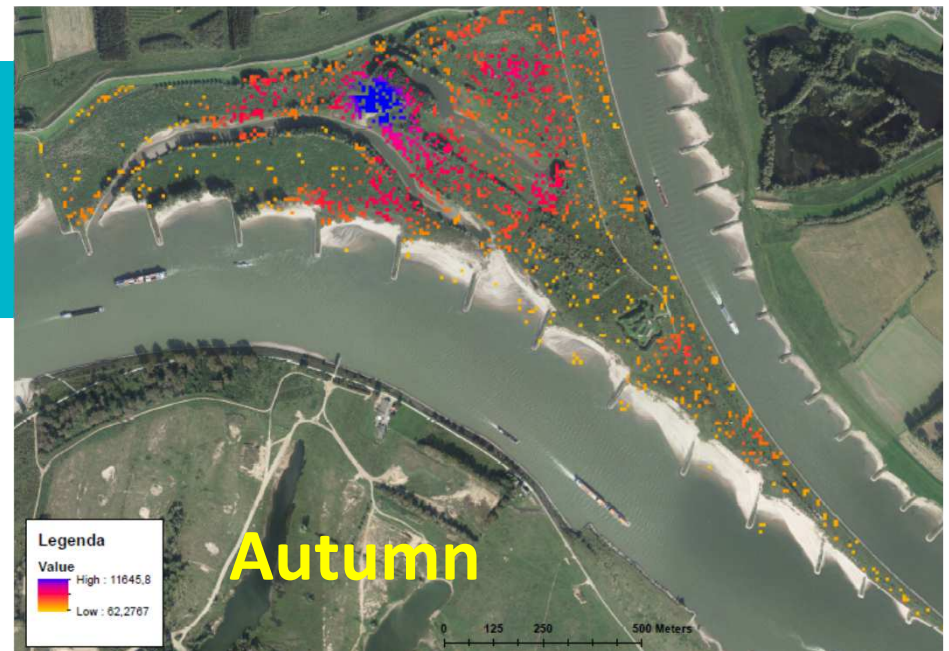
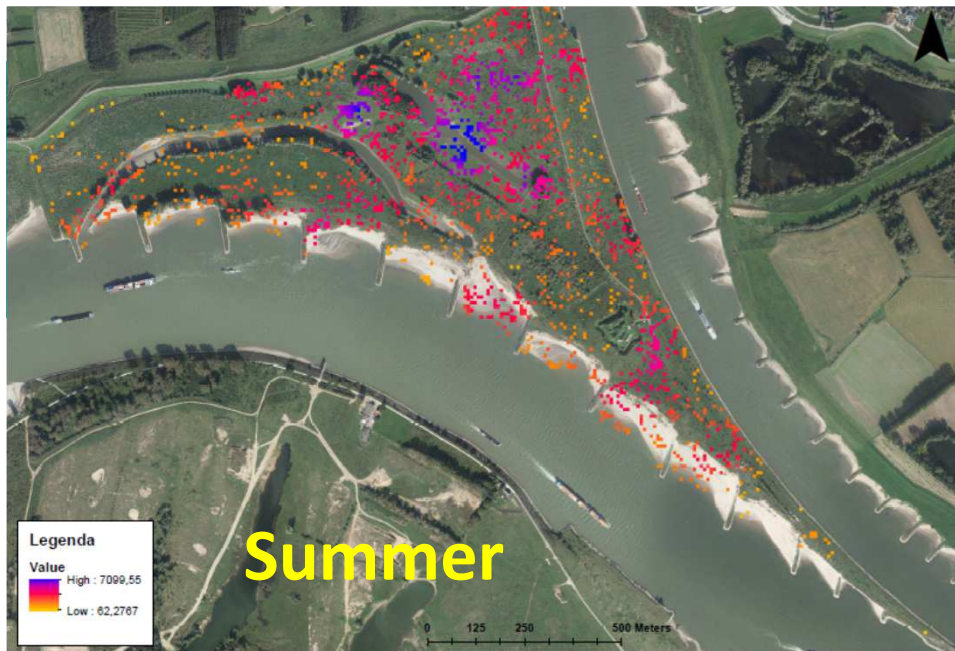




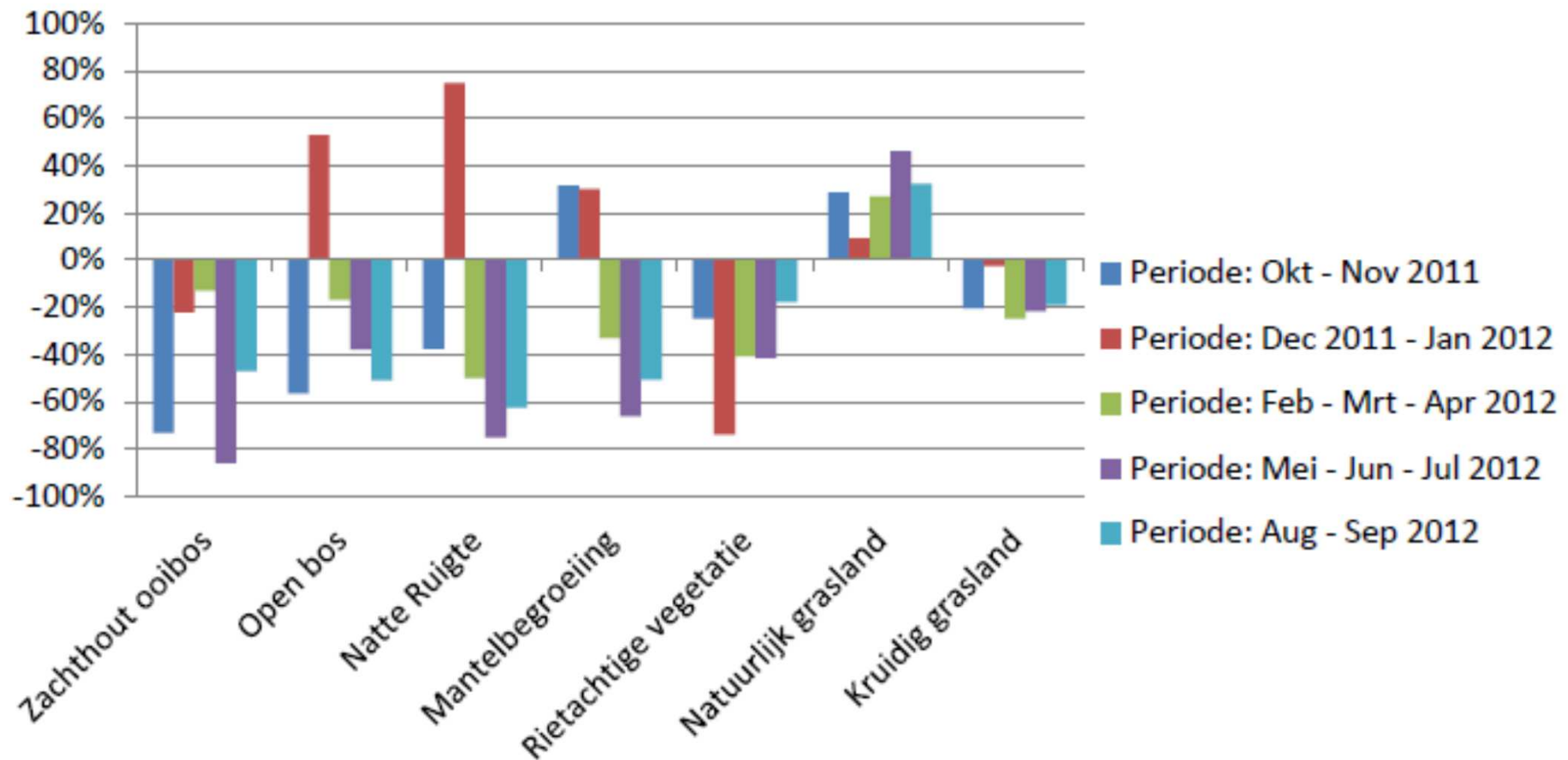
# Habitat use year-round





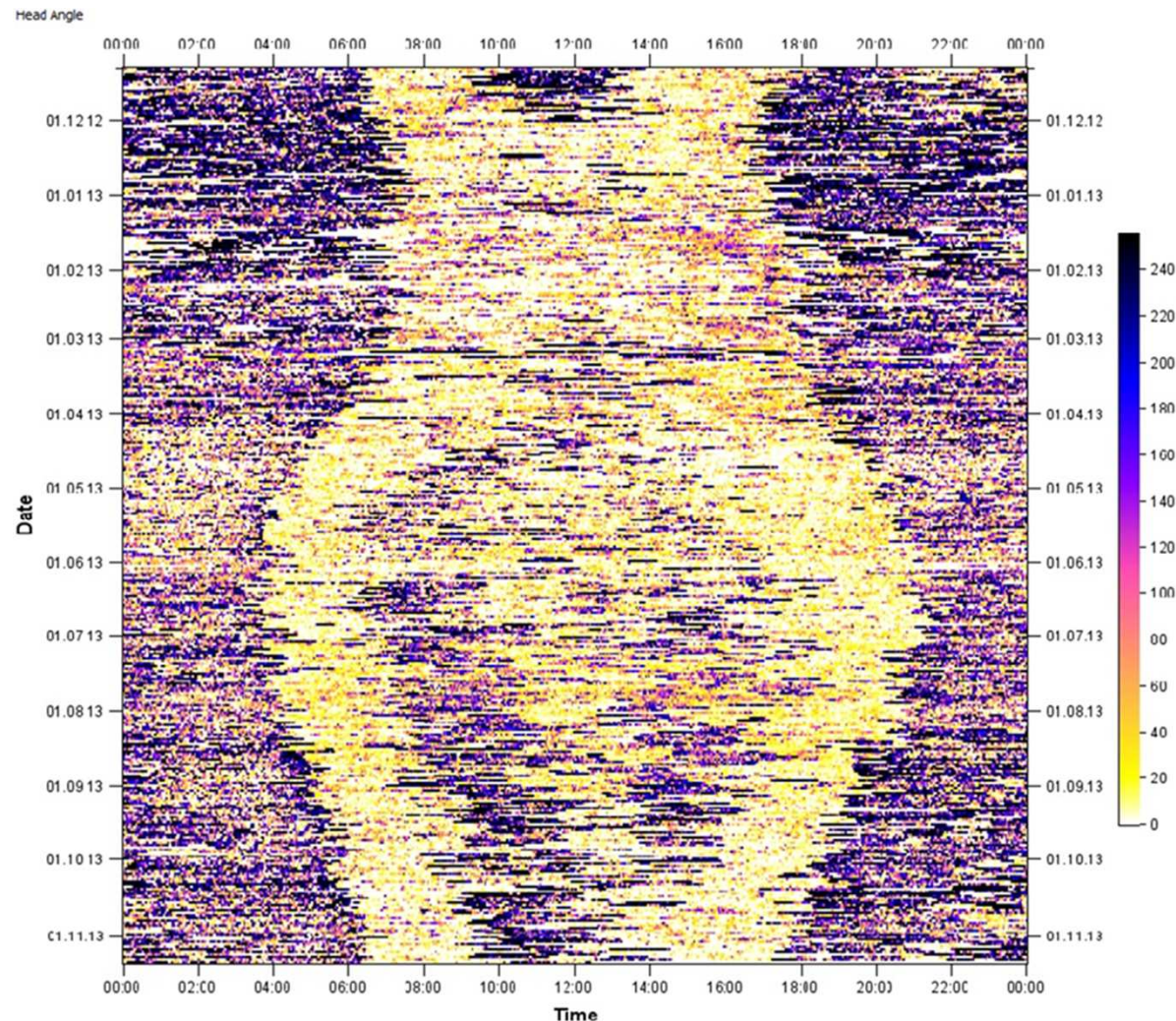


# Habitat preference and avoidance





# Seasonal and diurnal activity pattern (link with habitat preference)



# Main issues by measuring impact of grazers on vegetation development

- Formulation feasible questions by managers
- Fundamental research vs practical research ('How does it work ?' versus 'Does it work ?')
- Availability of long term basic data (aerial photography)