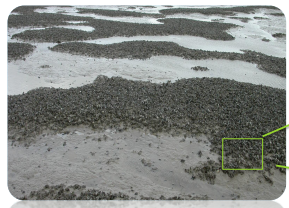


DON'T PANIC... ORGANIZE !

Spatial self organization drives the persistence of mussel beds

H. de Paoli ^(1,2), T. Van der Heide ^(2,3), B. Silliman ⁽⁴⁾, P. Herman ⁽¹⁾, J. van de Koppel ^(1,2)

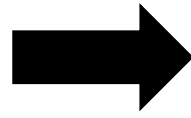
Self-organization occurs in newly-settled mussel beds:



Large-scale aggregation



Small-scale aggregation

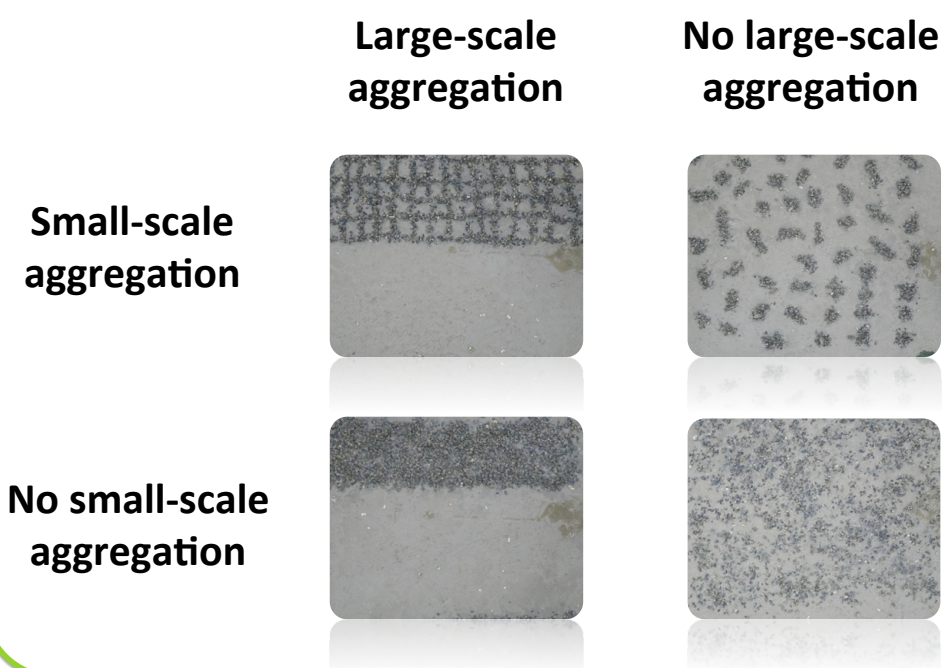


Does aggregation improve the resistance of mussel beds to wave attacks?

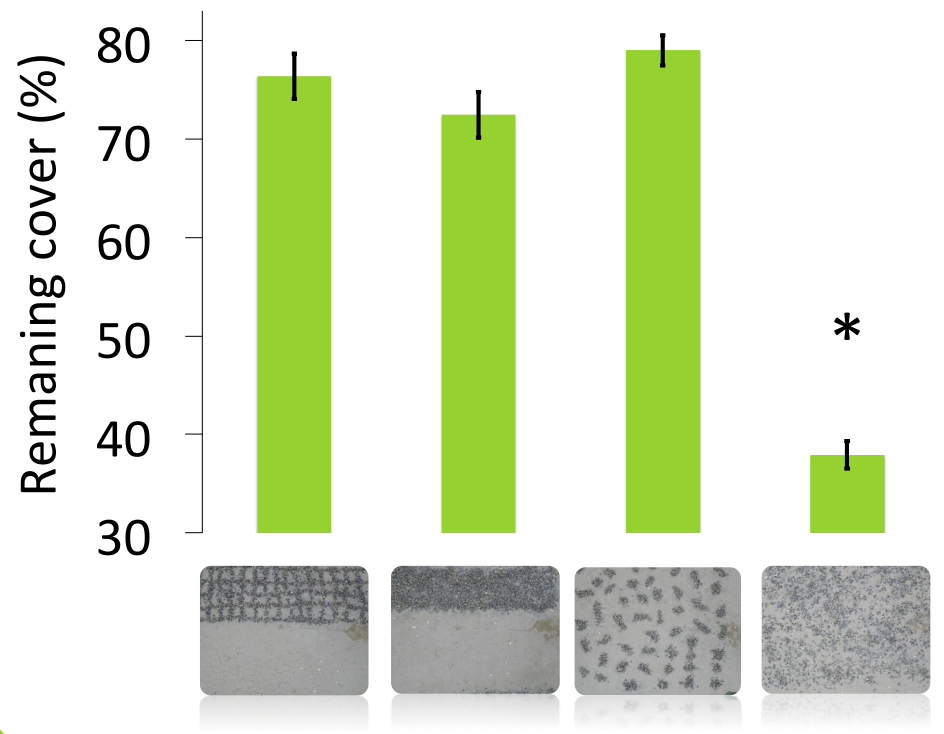


Setting up an experiment...

- 4 treatments (2 scales of aggregation)



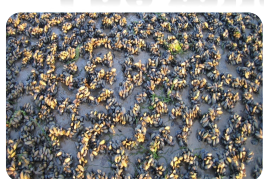
To see that aggregation helps...



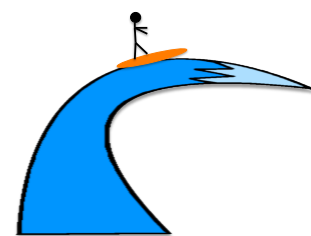
The mussel formula...



Large-scale aggregation



Small-scale aggregation



Mussel beds persistence

(1) NIOZ Royal Netherland Institute for Sea Research, Spatial Ecology Department, Korringaweg 7, 4401 NT YERSEKE

(2) Waddensleutels project

(3) Radboud University, 6500 HC NIJMEGEN

(4) University of Florida, Department of zoology, Gainesville, Florida 32611

Email address: Helene.de.paoli@nioz.nl

